

The Keadby Next Generation Power Station Project

Document Ref: 2.8

Planning Inspectorate Ref: EN0110001

**The Keadby Next Generation Power Station Development Consent
Order [year]**

**Land at, and in the vicinity of, the existing Keadby Power Station
(Trentside, Keadby, Scunthorpe DN17 3EF)**

Indicative Water Supply and Effluent Discharge Connection Plans

The Planning Act 2008

**The Infrastructure Planning (Applications: Prescribed Forms and
Procedure) Regulations 2009 Regulation 5(2)(o)**

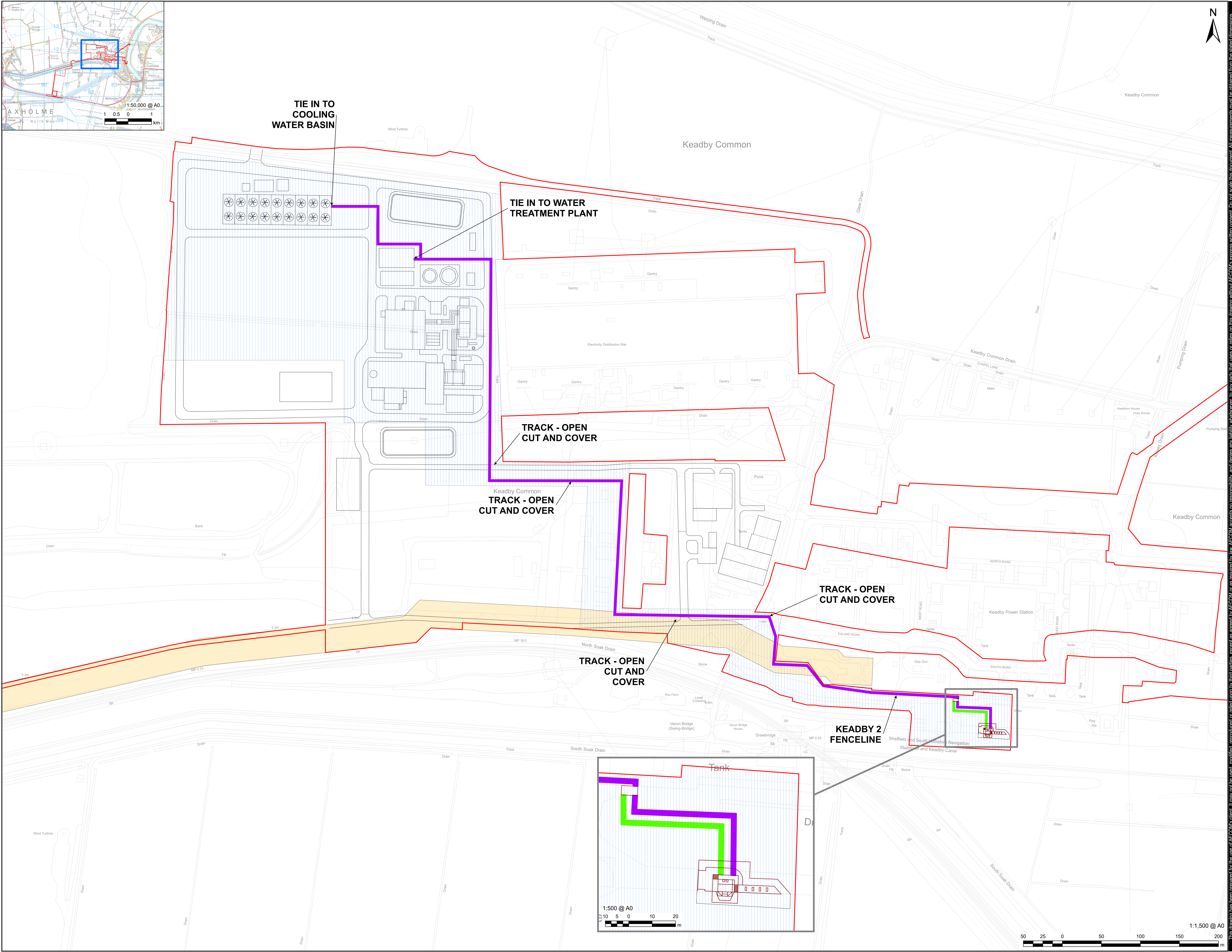
Applicant: Keadby Next Generation Limited

Date: August 2025

Version: V0

Document History

Document Ref	2.8 / Indicative Water Supply and Effluent Discharge Connection Plans
Version	V0
Document Owner	AECOM



- PROPOSED DEVELOPMENT SITE (ORDER LIMITS)
- INDICATIVE SITE LAYOUT
- ABSTRACTION PUMP
- WORK NO. 5 WATER SUPPLY CONNECTION WORKS
- WATER SUPPLY PIPELINE
- ELECTRICAL CONNECTION
- NTS PIPELINE EXCLUSION ZONE

Reproduced from Ordnance Survey digital map data © Crown copyright 2025. All rights reserved.
Licence number AC0000808122.

Keadby Next Generation Power Station - Schedule 1 - Authorised Development. In the Borough of North Lincolnshire, a nationally significant infrastructure project as defined in sections 14(1)(a) and 15 of the 2008 Act and associated development.

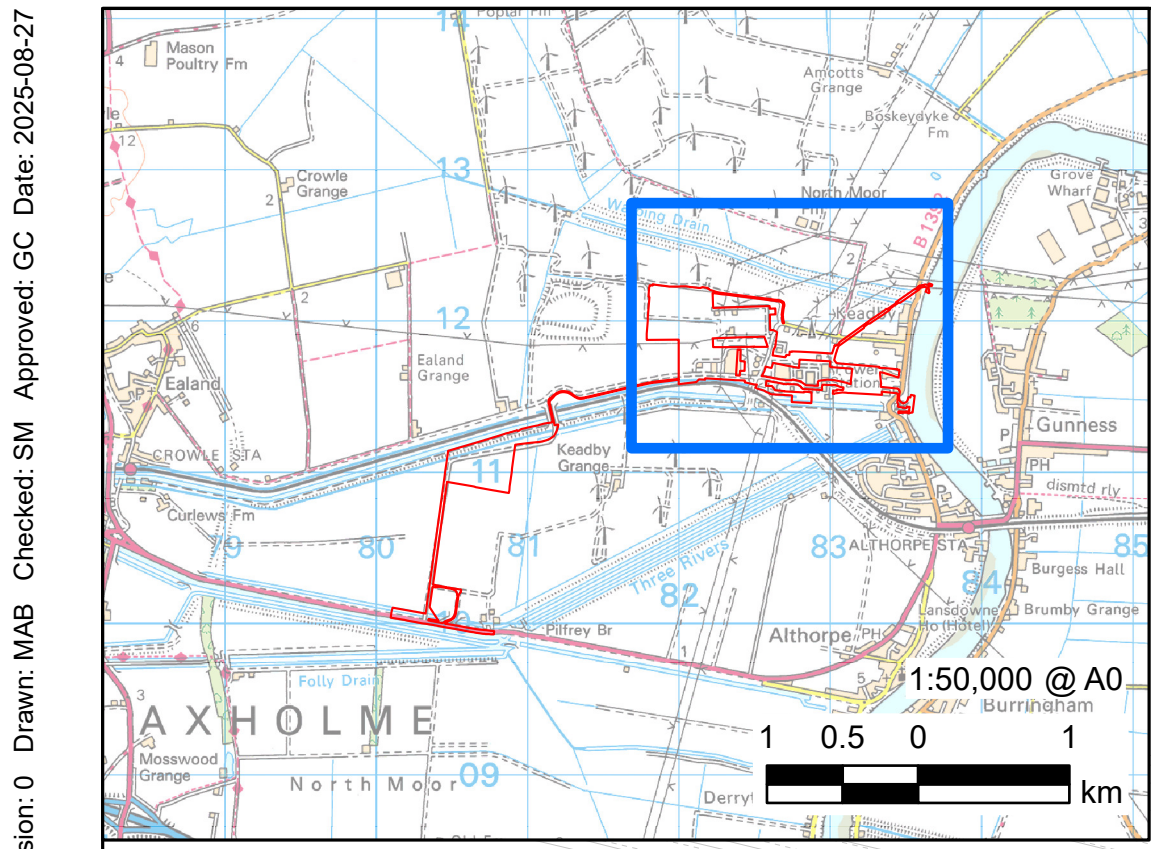
Application Document Ref. 2.8

DCO APPLICATION

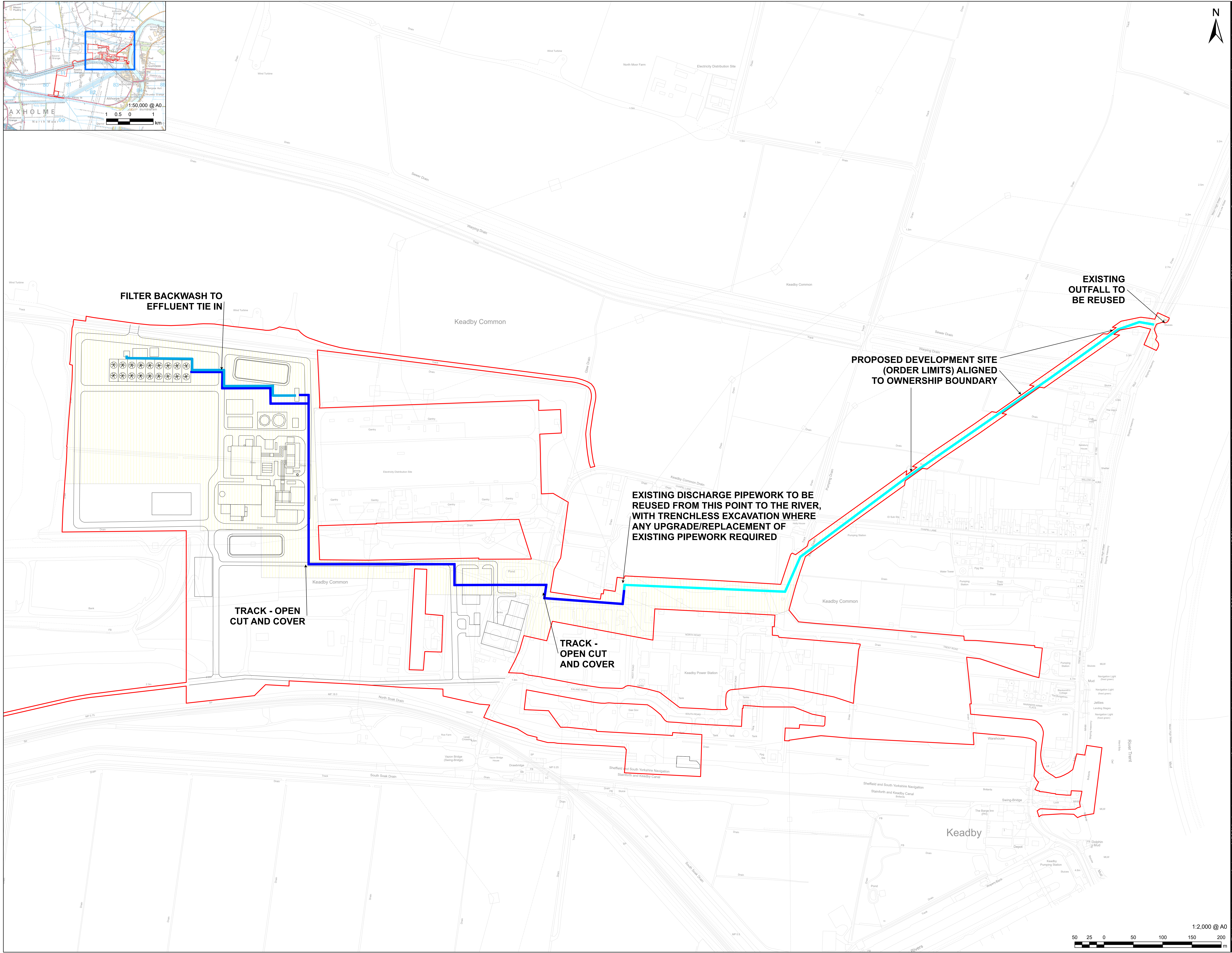
60721867

Indicative Water Supply and Effluent Discharge Connection Plans - Indicative Water Supply Plan

Sheet 1 of 2



- LEGEND**
- PROPOSED DEVELOPMENT SITE (ORDER LIMITS)
 - INDICATIVE SITE LAYOUT
 - FILTER BACKWASH
 - WORK NO. 6 EFFLUENT DISCHARGE CONNECTION WORKS
 - EFFLUENT DISCHARGE PIPELINE - EXISTING
 - EFFLUENT DISCHARGE PIPELINE - PROPOSED



NOTES
Reproduced from Ordnance Survey digital map data © Crown copyright 2025. All rights reserved.
Licence number AC0000808122.

Keadby Next Generation Power Station - Schedule 1 - Authorised Development. In the Borough of North Lincolnshire, a nationally significant infrastructure project as defined in sections 14(1)(a) and 15 of the 2008 Act and associated development.

APPLICATION REFERENCE
Application Document Ref. 2.8

ISSUE PURPOSE
DCO APPLICATION

PROJECT NUMBER
60721867

SHEET TITLE
Indicative Water Supply and Effluent Discharge Connection Plans - Indicative Effluent Discharge Plan

SHEET NUMBER
Sheet 2 of 2